

# JetWeb



**JetControl 900 Series**  
The Power Pack Among Controllers



# → Do You Want a Bit Extra?

## → Extremely talented

The brand-new controller belonging to our JetControl 900 series is a real all-rounder. For the CPU core of the JetControl 940, calculation of the whole range of control tasks - no matter how complex - is child's play. But this high-end controller is not only a powerhouse. It also impresses with its robustness and flexibility.

## → Absolutely robust

That JetControl 940 is manufactured with the usual high quality goes without saying. But the following feature turns this controller into a robust power pack: Its design completely avoids rotating components which are very susceptible to faults. You won't find fans or rotating data storage units. The clever thermal design of JetControl 940, however, guarantees maximum performance without any compromise.

## → Extremely flexible

Needless to say that you may expand the JetControl 940 - like any other JetControl controller - by adding JX3 modules. But that's not all: As standard, it is equipped with three Ethernet ports and four USB ports. This way, daisy-chain wiring can be implemented quickly and easily. You wish to connect peripheral devices, such as visualization PC, programming units, scanners or printers? No problem, either! And if this is not enough: You can upgrade your JetControl 940 by inserting up to five PCI cards to add more functions.

## → Enormously powerful

Its flexible design, numerous features (e.g. Modbus TCP, web server, e-mail client, etc.), and fast processing power make JetControl 940 the ideal solution for your needs. Have we aroused your interest? Just contact us for a personal quotation! Simply dial +49 7141 2550 433, or send an e-mail to [sales@jetter.de](mailto:sales@jetter.de).

Our software tool JetSym supports you in all phases of your project, that is, from programming to commissioning.

## → JetSym – Ingenious Programming

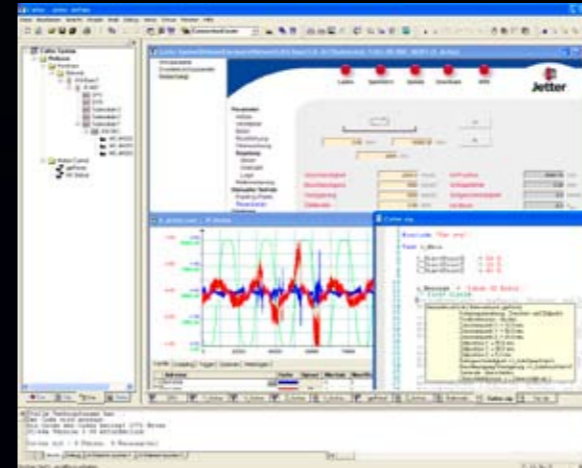
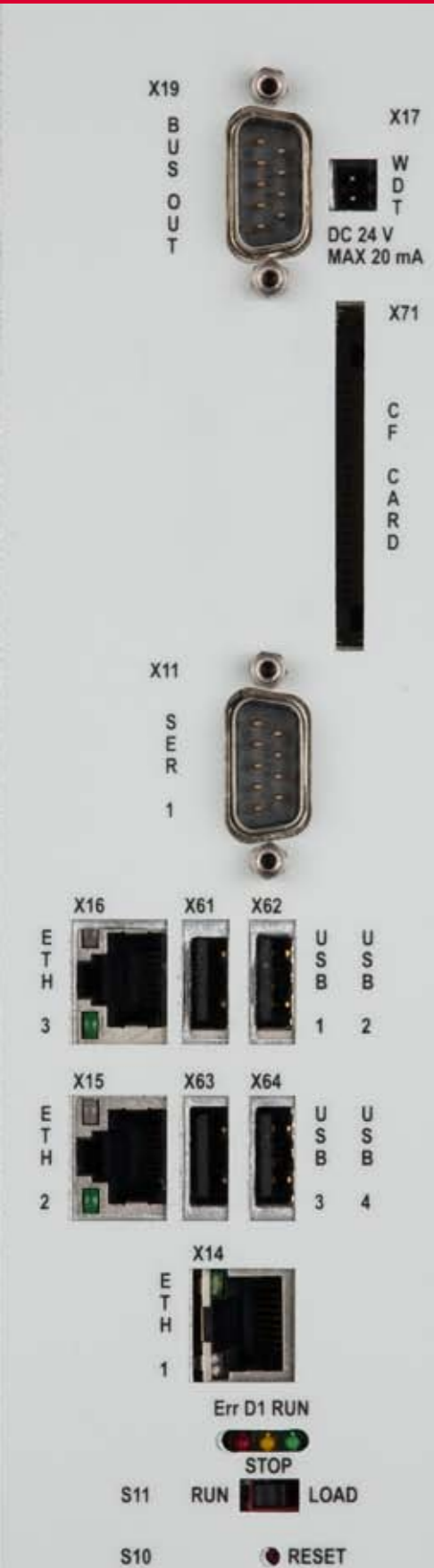
JetSym is the powerful software tool for programming and commissioning JetControl 940. JetSym will fulfil your every wish. For this tool is not only a result of many man-years of development, but also of a 25-year-old experience in automation.

The special features look quite respectable: the process-oriented language JetSym STX, multitasking with 100 parallel programs, path control instructions, object-oriented programming and much more. The best thing for you to do would be to check out our new JX3 starter kit right away. This way, you will experience hands-on the obvious ease of programming by JetSym STX.

For further information, please contact us directly or turn to [www.jetter.de/starterkit](http://www.jetter.de/starterkit) on the Internet.

## → Axis control made easy

A distinctive feature of JetControl 940 is its integrated axis control "MotionControl". It brings together the drive control systems of your plant, having been individual systems so far, to form an integrated solution. This approach will bring a radical simplification in axis handling. JetControl 940 is able to manage up to 64 axes simultaneously. The entirety of axis, technological and path control functions is available to you without any restrictions.



## → Technical Data - JetControl 940

Processor	1.86 GHz Celeron (fanless)
Memory	1024 MB SD RAM 512 KB non-volatile RAM CF card (as HDD replacement)
Interfaces	3 x Ethernet 4 x USB RS232 CAN
Power supply	24 V DC
Dimensions (W x H x D)	77 x 310 x 242 mm
Ordering code	10000742 JC-940MC



Jetter AG, Gräterstraße 2, D-71642 Ludwigsburg, Germany  
Phone: +49 7141 2550-433, Fax: +49 7141 2550-484, [www.jetter.de](http://www.jetter.de), E-mail: [sales@jetter.de](mailto:sales@jetter.de)

Jetter Schweiz AG, Switzerland, Phone: +41 71 91879-50, [www.jetterag.ch](http://www.jetterag.ch), E-mail: [info@jetterag.ch](mailto:info@jetterag.ch)  
Jetter Asia Pte Ltd., Singapore, Phone: +65 6483 8200, [www.jetter.com.sg](http://www.jetter.com.sg), E-mail: [sales@jetter.com.sg](mailto:sales@jetter.com.sg)  
Jetter Automation Inc., USA, Phone: +1 440 8380-860, [www.jetterus.com](http://www.jetterus.com), E-mail: [bschulze@jetterus.com](mailto:bschulze@jetterus.com)